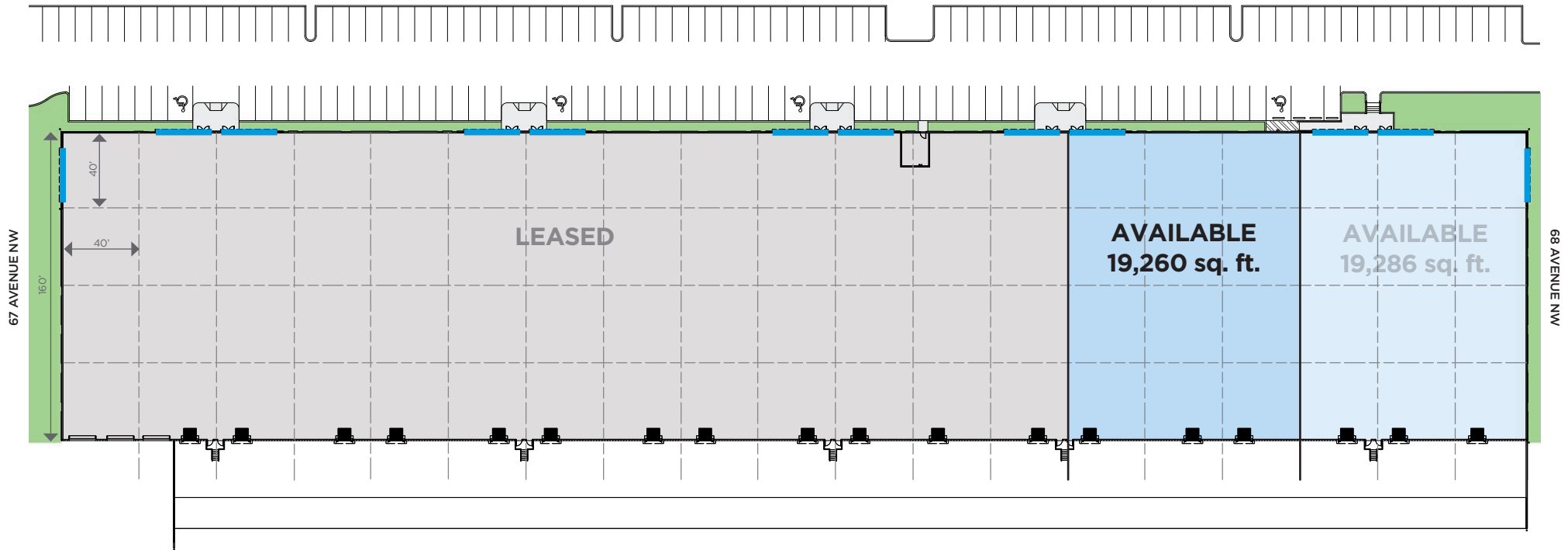


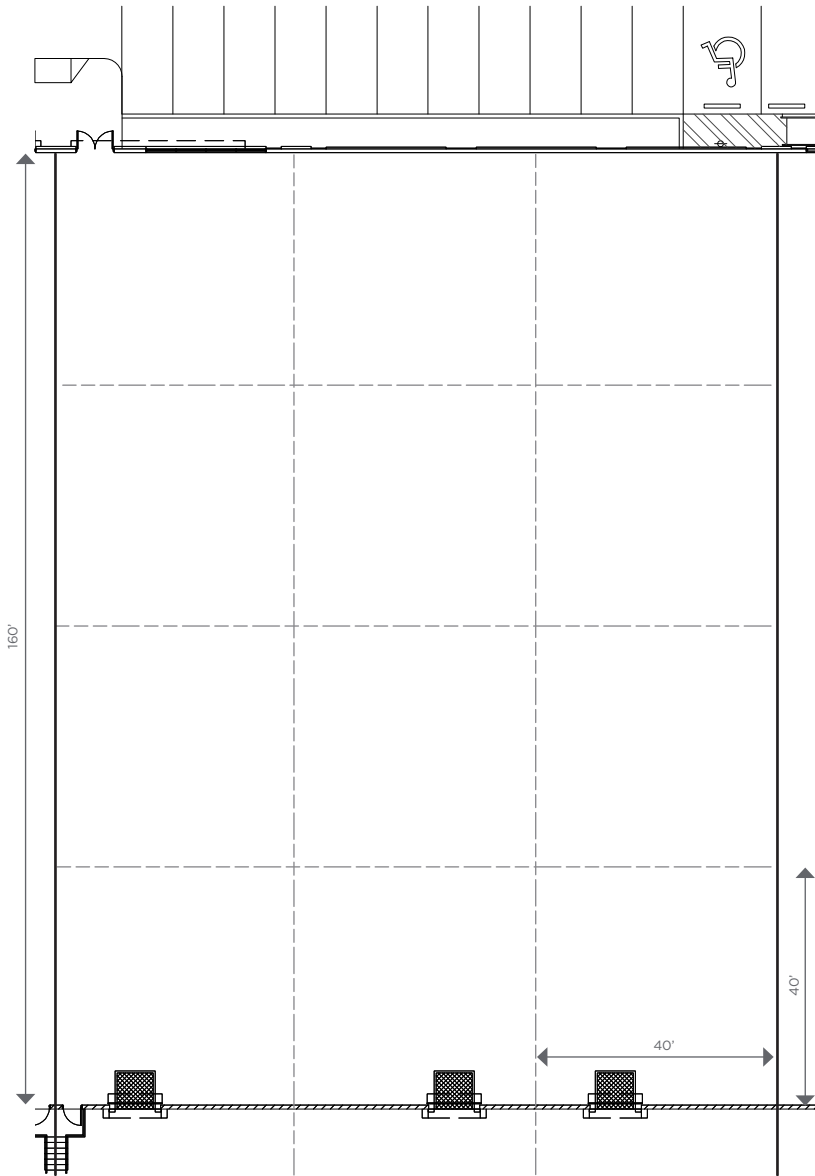
BUILDING D (BAYS 14-16)



Blue line indicates extent of storefront glass.

5136 - 67 Avenue NW
Total Building Size: 121,795 sq. ft.

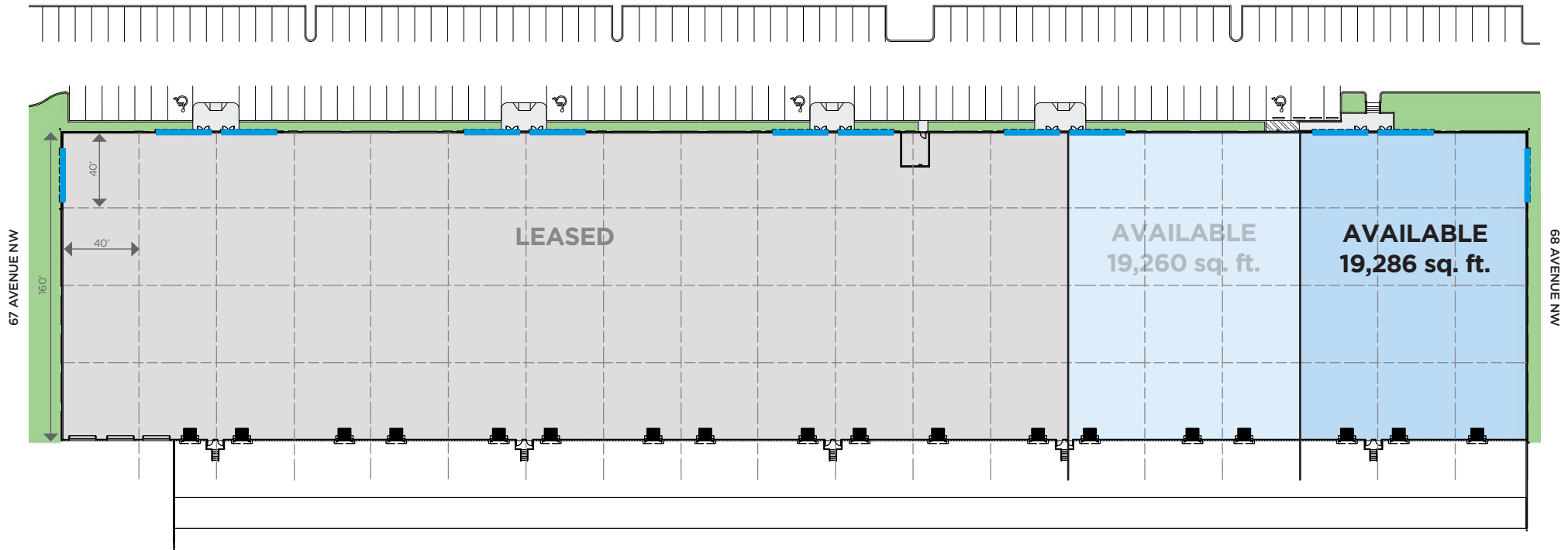
BUILDING D (BAYS 14-16)



FEATURES

- Available immediately
- Operating costs (2020): \$4.65 psf
- +/- 19,260 sq. ft. available space
- Design build office opportunity
- 28 ft. clear height
- Electrical as per tenant's needs
- 3 dock doors
- Industrial Business (IB) Zone

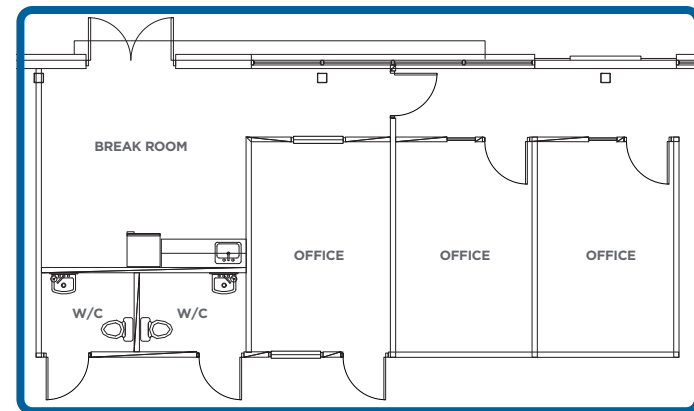
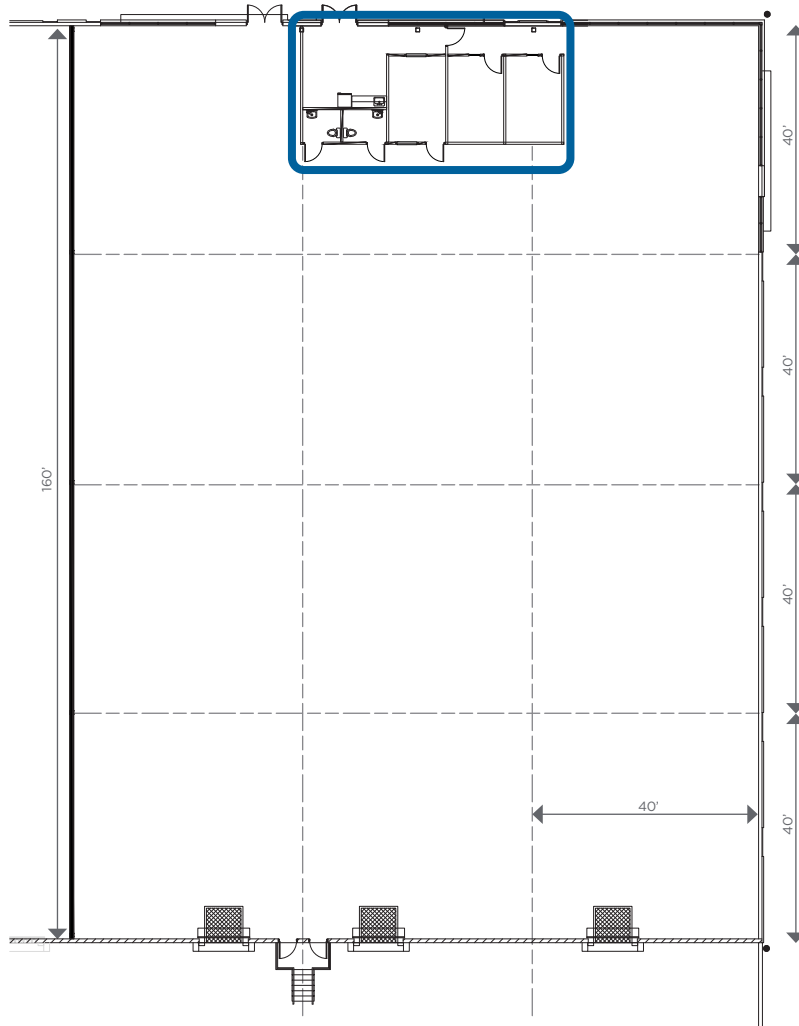
BUILDING D (BAYS 17-19)



Blue line indicates extent of storefront glass.

5144 - 67 Avenue NW
Total Building Size: 121,795 sq. ft.

BUILDING D (BAYS 17-19)



FEATURES

- Available November 2020
- Operating costs (2020): \$4.65 psf
- +/- 19,286 sq. ft. available space
- +/- 750 sq. ft. office space
- 28 ft. clear height
- 3 dock doors
- Industrial Business (IB) Zone