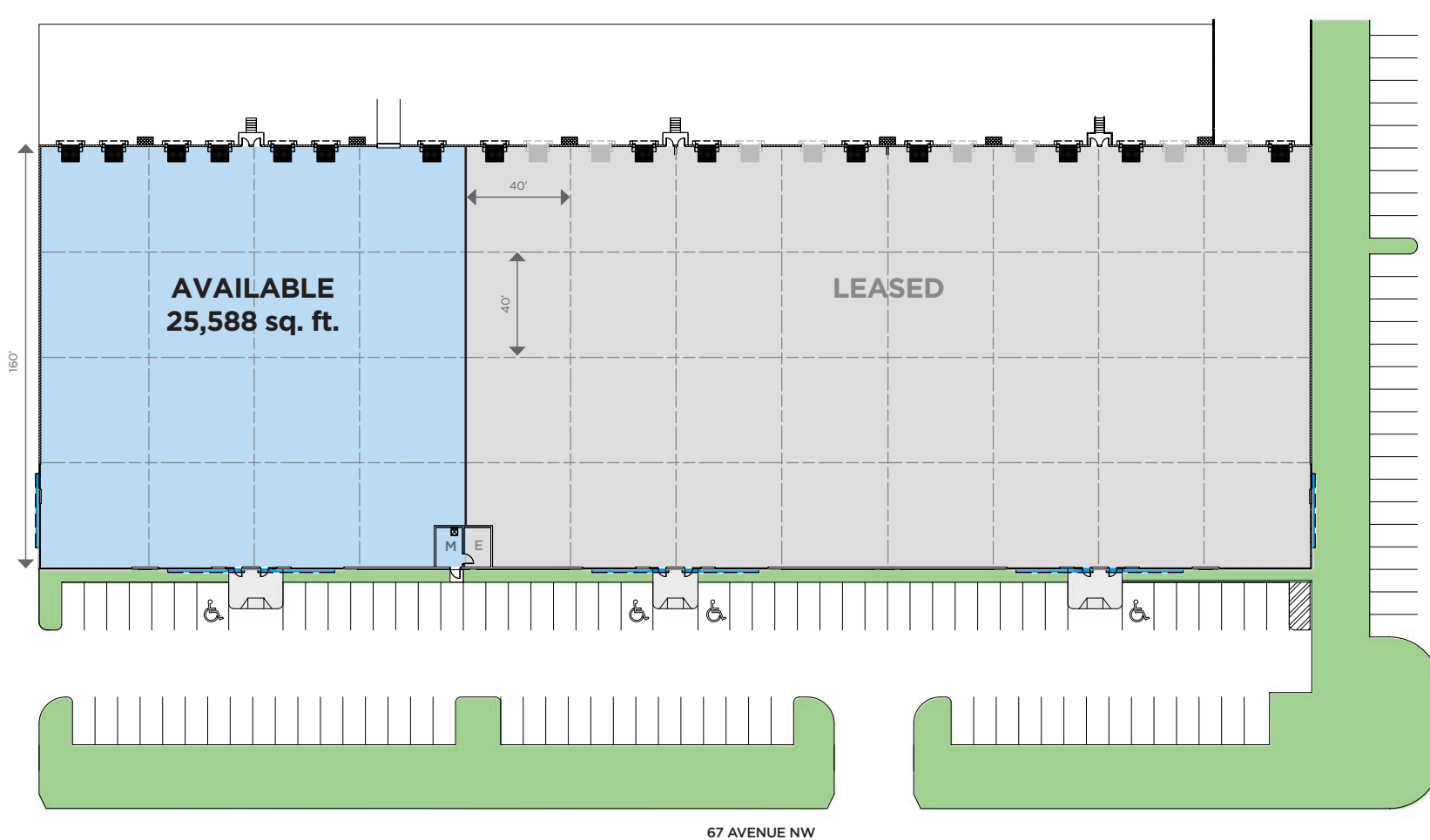
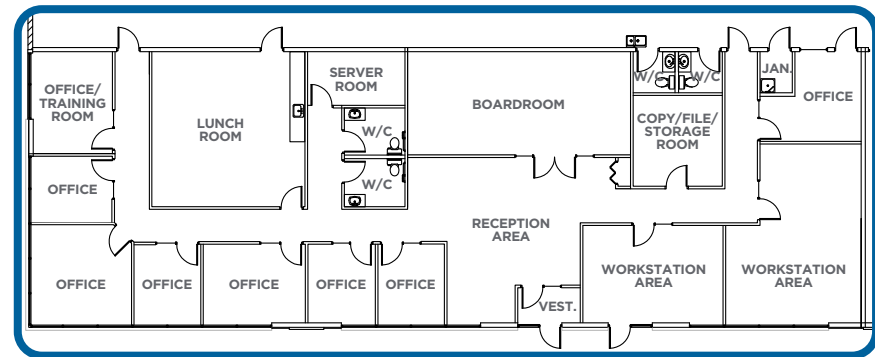
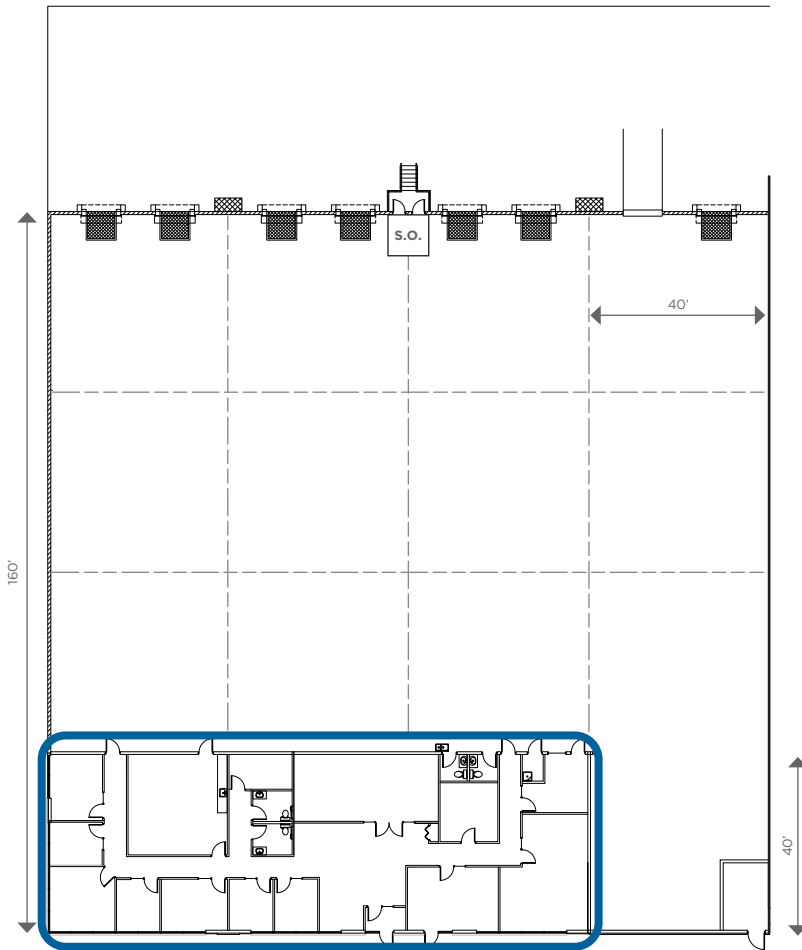


BUILDING K



Blue line indicates
extent of storefront glass.

5744-40 - 67 Avenue NW
Total Building Area: 76,910 sq. ft.



FEATURES

- Available immediately
- Operating costs (2020): \$4.37 psf
- +/- 25,588 sq. ft. available space
- +/- 4,742 sq. ft. office space
- 7 dock doors
- 1 ramp to grade
- Medium Industrial (IM) Zone